

Jody Zellen">

artillery

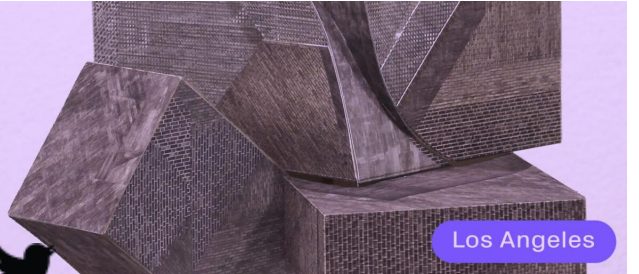
SCI-ARC

A School of Architectural Thinking

Advanced Degrees
in Architecture



Los Angeles



Current Issue

Features

Reviews

Columns

Departments

Calendar

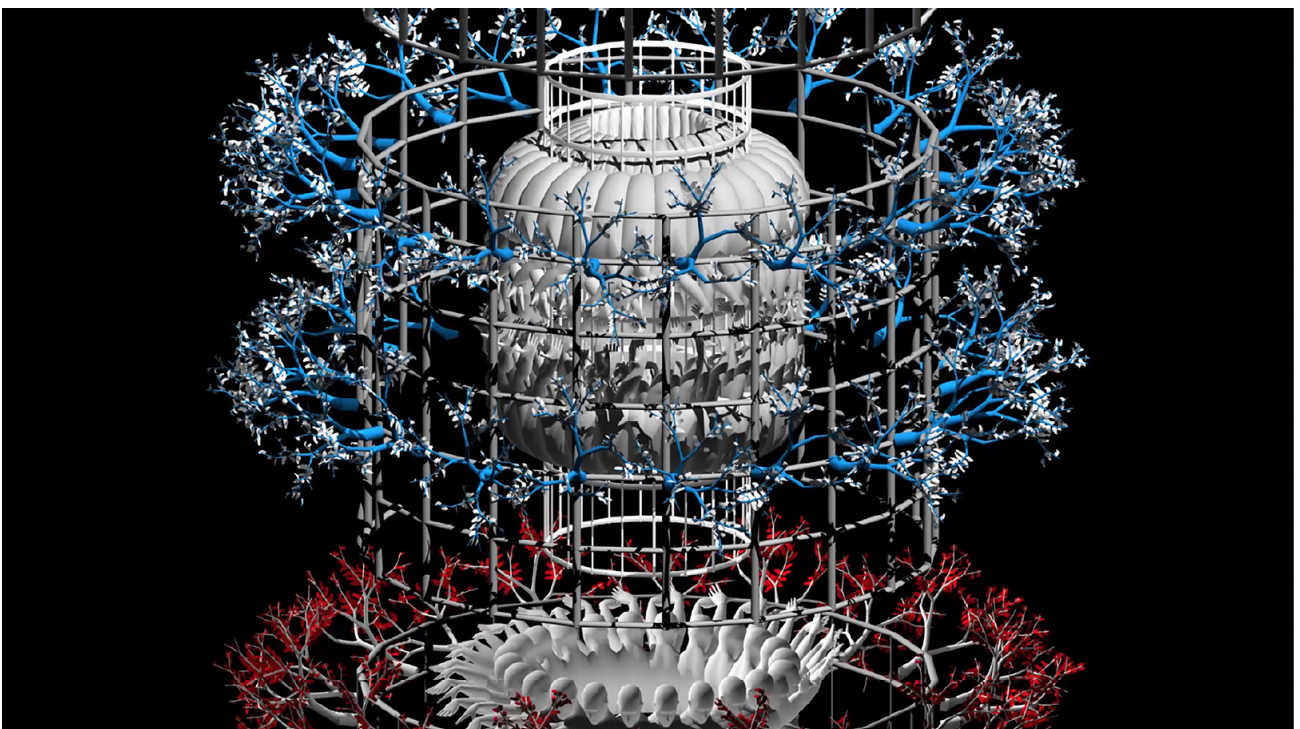
Newsletter

Subscribe



Giovanni Battista Piranesi & Gregory Bennett

by Jody Zellen | Jan 2, 2019



Gregory Bennett, *Torsade III*, HD video with audio, 8 minutes, 1 second looped (2017),
courtesy of AA|LA.

New Zealand based digital artist Gregory Bennett is a virtuoso when it comes to utilizing high-end 3D animation software and motion capture to create animated videos in which featureless android bodies inhabit synthetic worlds, wherein they are trapped in perpetual loops. As the camera's point of view pivots (here, it is the all-seeing eye), robotic bodies frolic, perform calisthenics and march in place as if on a never ending conveyor belt traversing a geometric metropolis.

The ingenious pairing of Bennett's three animated videos *Panopticon I* (2015), *Torsade III* (2017) and *Exosphere* (2018), with Giovanni Battista Piranesi's etchings from *Imaginary Prisons* (ca. 1740s) calls attention to the similarities and differences in the creation of these fantastic spaces. While Bennett's works maximize what can be done with digital technology, Piranesi's cross-hatched lines, vertiginous compositions and exacting geometry also pushed the boundaries of what was possible in his time. His etchings detail labyrinthine architectural spaces that are darkly mysterious and seemingly endless. His works depict church-like architectural spaces that function as prisons where anonymous figures (as silhouettes and shadows) are hidden within the darkness. Piranesi's prison spaces are confined, yet suggest infinite expanses from which there is no escape.

A similar atmosphere pervades Bennett's work. His software-modeled robotic figures go about their routines, moving through geometric landscapes like soldiers in formation. Occasionally some group together to become mechanized structures or flowers dancing in unison like synchronized swimmers. Their world is utopian and dystopian simultaneously. In Bennett's 8-minute *Torsade III*, the figures are trapped in ever-morphing circular cages that spiral from the top to the bottom of the screen. It is unclear, however, whether they are being held against their will. The pulsating electronic soundtrack reinforces this ambiguity. Although the juxtaposition with Piranesi is apt, Bennett's animations also share a kinship with the works of M. C. Escher whose impossible, labyrinthine structures also explored the idea of infinite spaces.



Giovanni Battista Piranesi, *The Giant Wheel*, (Designed 1749 – 50, Printed 1835 – 39), courtesy of AA|LA.

The digital environments of Bennett's animations echo Piranesi's and Escher's worlds, where stairways lead nowhere or abruptly end. Yet, in Bennett's renderings, the figures, plants and machines are often depicted in shades of red, yellow, green and blue so they stand out from the gray architectural structures. The addition of color humanizes the otherwise sterile and mechanized atmosphere of this closed, self-sustaining system filled with isolated figures. In *Panopticon I*, the scene rotates from a fixed centered position and

transitions from interior to exterior as well as from day to night within the ever-morphing gridded architecture.

In the twenty minute animation *Exosphere* Bennett creates a prison-like space in which featureless male bodies perform mechanical tasks, like hamsters endlessly spinning on a wheel, yet controlled by unseen masters. Because Bennett creates animations, he can pan through environments and change the camera's focus from distant to close up. In this respect, he develops more expansive worlds in a single work than either Piranesi or Escher could in order to create fascinating, mechanized environments.

0 Comments

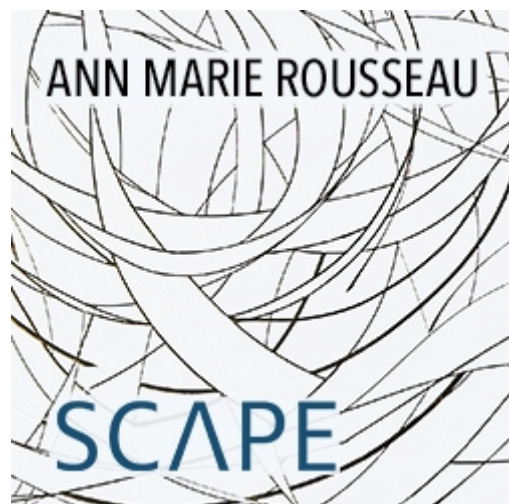
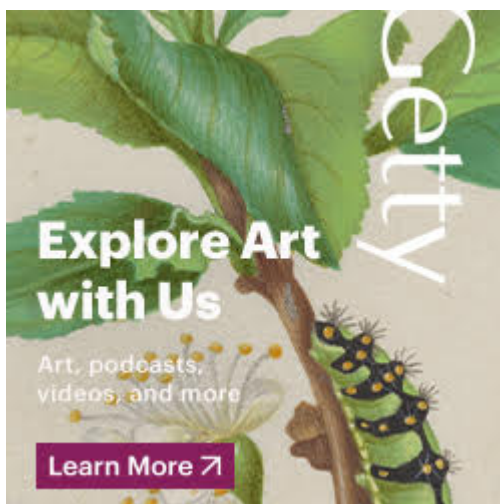


January 4—May 9, 2021

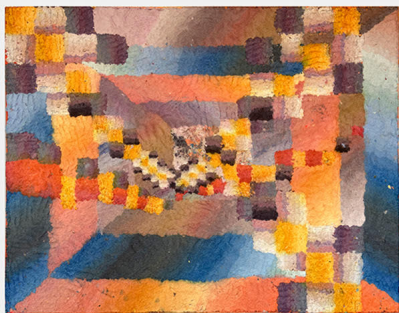
www.laurenkasmermomena.com

Momena by Lauren Kasmer is a solo multimedia exhibition in the photo gallery presented online by The Cooper College Art Gallery.

ATTENTION: THE ARTS COUNCIL OF THE METROPOLITAN POLICE IS CURRENTLY SEARCHING FOR THE ARTIST.

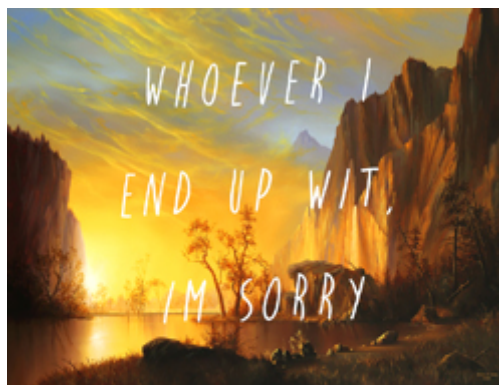


parrasch heijnen



EMMA SOUCEK - EDGE EVENTS

April 7 - 28, 2021



SHAWN HUCKINS

GEORGE BILLIS GALLERY **LA**



SARAH WILLIAMS

GEORGE BILLIS GALLERY **LA**



deadline May 9, 2021

Exhibition: June 3 - 26, 2021

ROLAND REISS

THE CASTLE OF PERSEVERANCE

CURATED BY JORIN BOSSEN

APRIL 24 – MAY 29, 2021

Art Media

About Us

Advertise

Stay in the Know

Subscribe to our newsletter



Have a Tip?

We want to hear from you! Send us a tip using our anonymous form.

SEND US A TIP

Send us a tip



Submit

Subscriber Support

Subscribe to Artillery Magazine
Purchase Back Issues
Contact Us

Distribution

Pick Us Up at Participating Galleries and Newstands